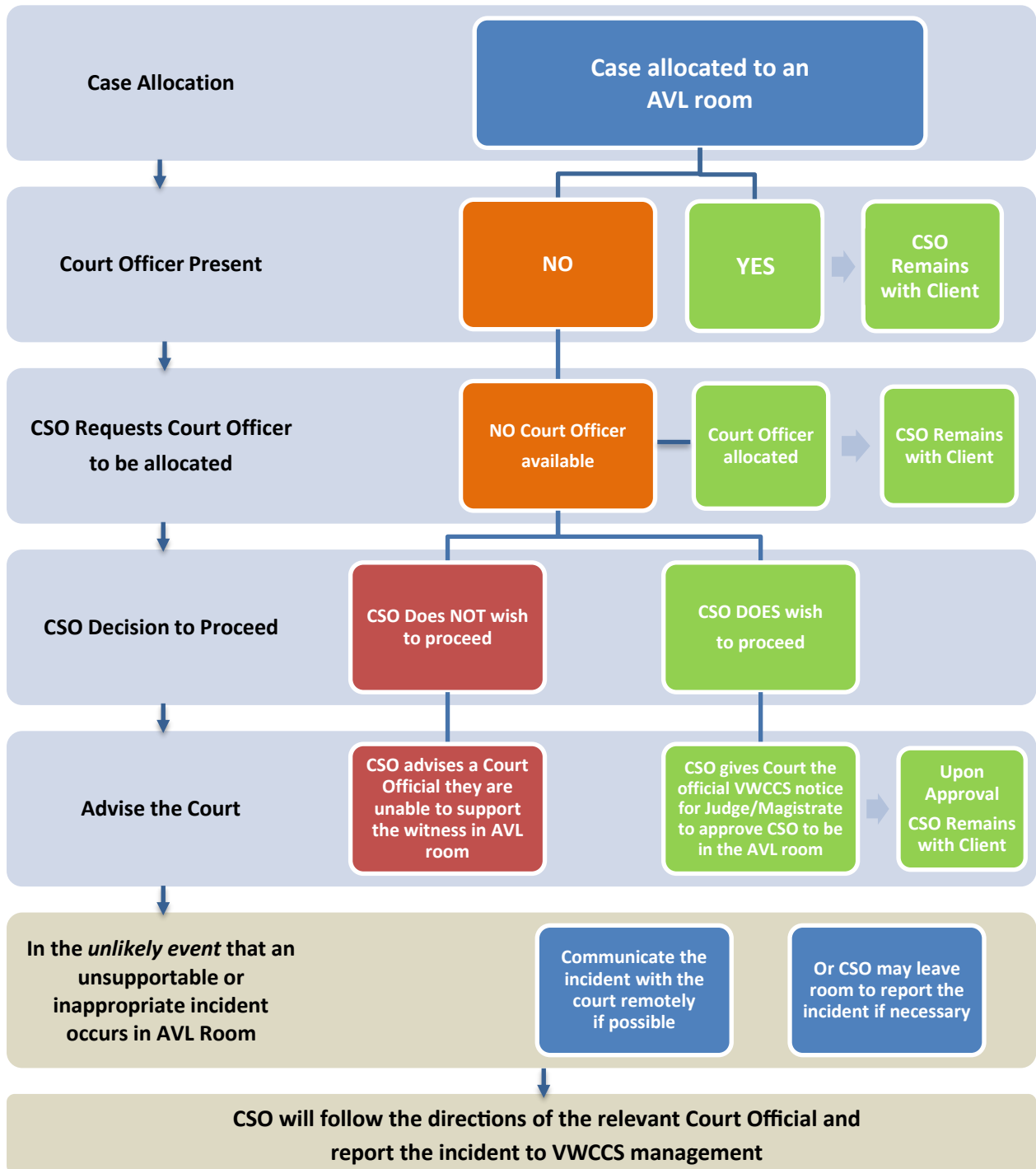


## AVL ROOM CSO PROCEDURES



### Parameters:

- Our primary purpose in supporting the judicial process is by preparing and assisting witnesses to give their best recollection of events that have led to the matter.
- If a magistrate advises that we can support a witness without a court officer being present we should follow the advice of the judicial officer (Magistrate).
- At each stage of the process the CSO makes the decision on whether or not to remain with the client.
- Under NO circumstances does the CSO take on the role of the Court Officer.
- Under NO circumstances does the CSO handle any evidence or equipment.
- We support our CSO's in their decisions, whichever decision they take in such matters.